

What is being proposed?

A development proposal has been submitted by the Friends of the Bible Garden Committee to Council for new works at the Garden. The Committee manages the Garden with Pittwater Council being the land owner. The proposal is for works outlined in the the *Bible Garden Plan of Management, 2006* and seeks to address the following aspects:

1. the desire to improve the existing street level parking,
2. the design of associated garden terraces associated with point 1, and
3. the provision of a new garden storage shed.

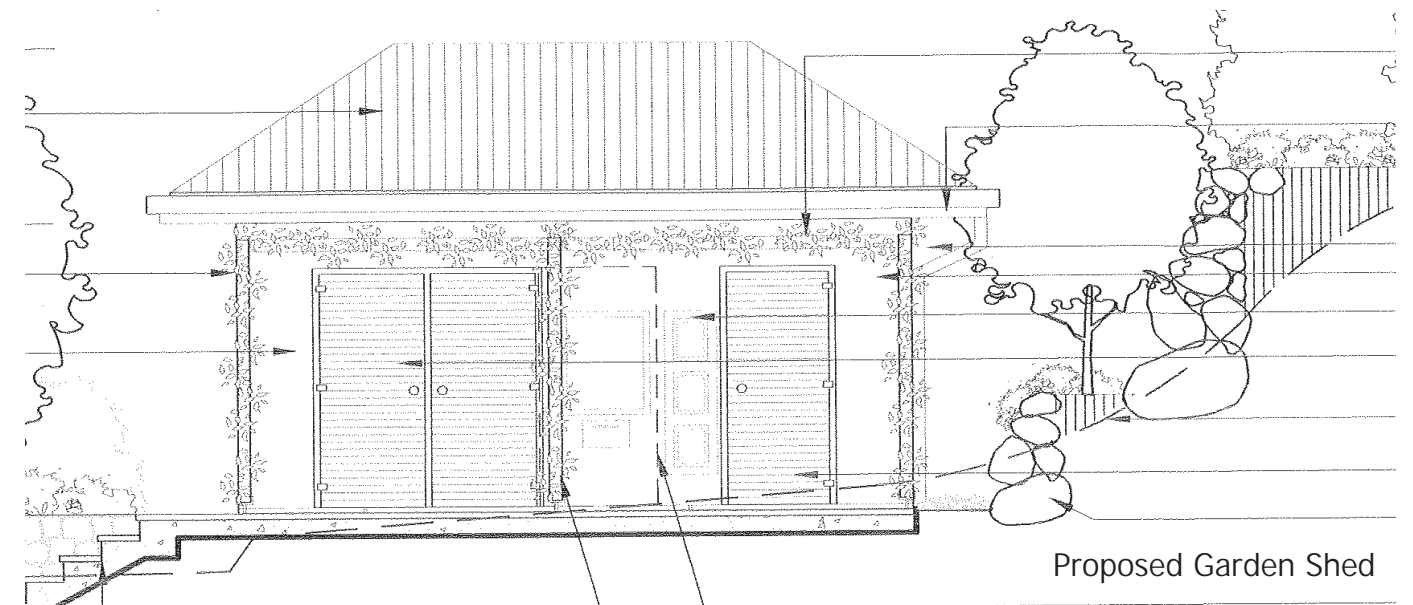
The key elements of the proposal include:

- a widened road verge to provide two carpark spaces;
- improved entry with new stairs and sandstone flagged path;
- overall garden refurbishment including terracing and a garden storage shed;
- removal the damaged Oak tree (*Quercus ilex*) and replacement with an advanced tree of the same species in a similar position; and
- general garden refurbishments including a low garden wall and plantings.

How is the proposal being assessed?

The proposal will be assessed internally by Council staff under Part 5 of the *Environmental Planning and Assessment Act, 1979*. Part 5 provides an assessment process that must be applied to decisions regarding activities to gauge whether the activity is likely to significantly affect the environment. As part of the process Council is placing the development proposal on public exhibition.

Following assessment the Committee will be notified of the decision. If approval is given, the Committee will appoint an independent contractor or Council to carry out the works with costs borne by the Committee.



How can I find more information?

The plans can be viewed at www.pittwater.nsw.gov.au/documents_on_exhibition.
or at Council's customer service centres and libraries at Avalon and Mona Vale during business hours. The full sized drawings are available at Avalon Library.

How can I have input?

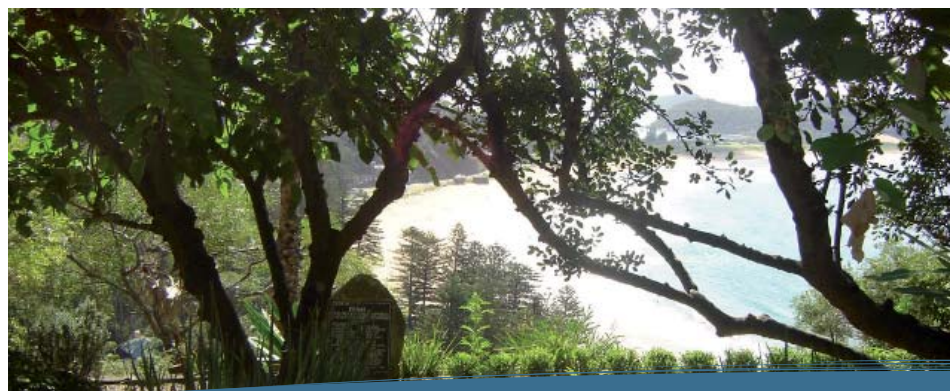
Comments should be in writing and be received by 5 February . Address submissions to the General Manager, Pittwater Council, P O Box 882 Mona Vale 1660
Attention Jenny Cronan or emailed to Pittwater_Council@pittwater.nsw.gov.au.

Please note that all submissions in their entirety will be treated as public documents and made available on request.

Upon completion of the assessment process Council staff will contact all people who furnished a submission to advise the outcome.

Enquiries

Jenny Cronan on 9970 1357 or email jenny_cronan@pittwater.nsw.gov.au



The Bible Garden, Palm Beach
Development Proposal Outline